



Connected to You.SM
Connected to Texas.



Yesterday

- **Manual meter reading** — A meter reader typically has to enter your property each month to read your meter.
- **Monthly view of your electricity use** — Since traditional meters are read manually each month, they can only measure the total amount of electricity used over an entire billing period.
- **Service requests** — Service connections require a two-day notice, and AEP Texas is notified of power outages by customers.



Today

- **Improved reliability** — Smart Meters automatically will pinpoint outage locations so repairs can begin quickly.
- **Enhanced customer service** — Through remote capabilities, AEP Texas can respond faster to service requests, such as meter reading and service connections.
- **Greater privacy** — Since Smart Meters can be read remotely, meter readers will no longer have to enter your property each month.



Tomorrow

- **Reduction in service fees** — With remote connection capabilities, service fees can be reduced .
- **Next-day access of your electricity use** — You'll be able to view your use online so you can better understand your usage habits.
- **Expanded product options** — Your Retail Electric Provider (REP) may offer new, innovative price plans, such as time-of-day rates and pre-paid metering.
- **Home Area Network (HAN)** — Over time, you'll be able to remotely control "smart" appliances like your thermostat at your home or business through the Internet.

Advanced Thinking for Enhanced Living

The AEP Texas Advanced Metering Infrastructure system (AMI) is a program that moves the existing electric grid into the digital age. Smart Meters are the heart of the AMI program, which is part of a broad AEP Texas gridSMARTSM initiative. Smart Meters will transport us into a new era of energy delivery and customer service. For you, this means greater reliability, enhanced customer service and innovative tools that will help you save money and energy.

What is a Smart Meter?

A Smart Meter, along with a two-way communications network, will provide near real-time collection and secure transfer of your electric usage information. This allows you to have access to more detailed information about your electricity use so you can make informed energy choices that can influence your electricity bill and your impact on the environment. Additionally, AEP Texas will be able to better manage overall energy needs and quickly detect power outages.

Why Smart Meters?

In a time of rising energy prices, many states are requiring electric utility companies to provide more energy efficiency options. Smart Meters will encourage us all to think more about how and when we use electricity, helping us meet current and future energy needs.

For more information

To learn more, including the AEP Texas schedule for installing Smart Meters throughout the service territory, visit us at:

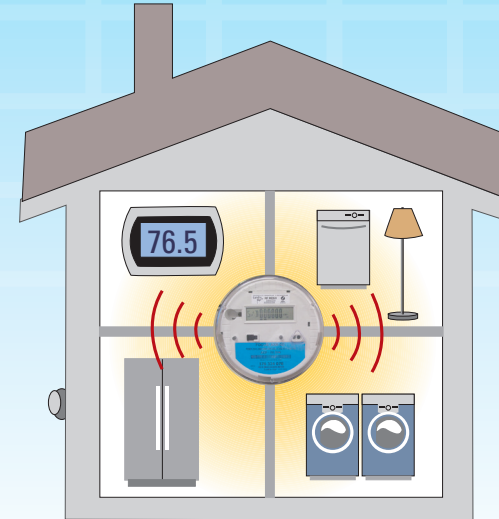
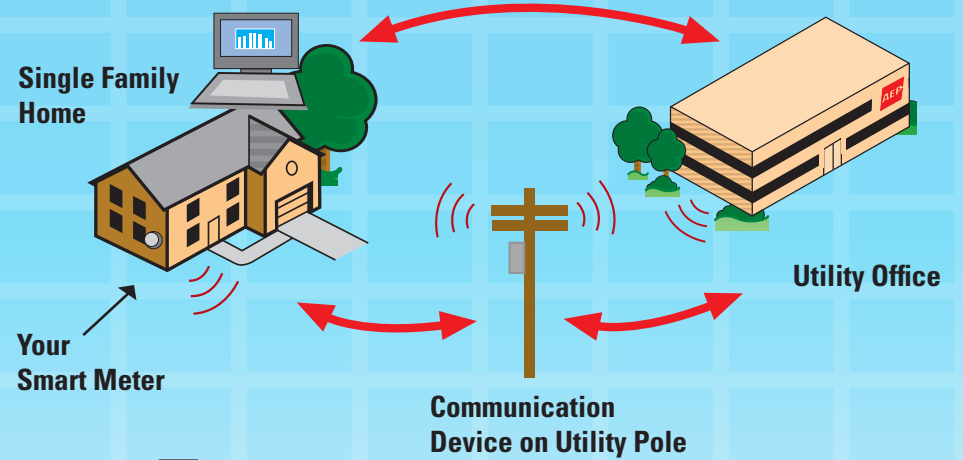
AEPTexas.com or call 1-877-373-4858



Smart Meters will provide customers with the tools to make wise energy decisions, giving them more control over how they use electricity and, ultimately, more control over their monthly bill. Additionally, AEP Texas will have the ability to serve customers more efficiently.

Pablo Vegas, President and COO, AEP Texas

Advanced Metering Infrastructure System (AMI)



Home Area Network (HAN)

Many companies are developing home area network (HAN) technology, which will allow customers to remotely connect to and control automated digital devices or appliances at home. In the future, Smart Meters can integrate with a HAN so you can remotely turn home equipment on or off to help conserve energy.