

# UNDERSTANDING SOLAR METERING



**1** Solar panels transform energy from the sun into electricity.



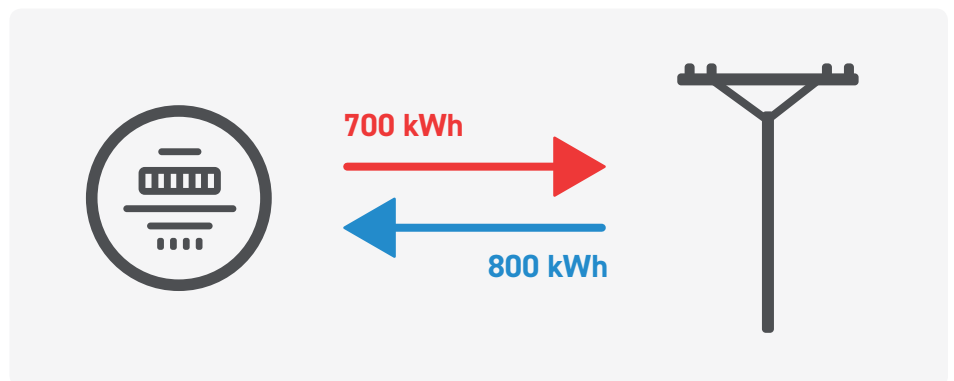
**2** An inverter converts the electricity (produced by the solar panels) from direct current (DC) to alternating current (AC) for use in your home.



**3** Energy is used to power your home. This utilizes your solar power and the electric grid.



**4** A utility meter measures both energy used from the electric grid and excess energy produced from your solar panels.



## FOR EXAMPLE:

If solar panels on a home produce 1,000 kilowatt-hours (kWh) a month, and the home consumes 300 kWh (lights, air conditioning, appliances, etc.) of the 1,000 kWh produced; then, 700 kWh of excess energy flows back to the electric grid.\*



An AEP Company

If the home consumes 800 kWh from the electric grid when the solar panels are not generating electricity; then, the consumer receives a bill from their Retail Electric Provider (REP) for the 800 kWh consumed.

*\*The customer must contact their REP to receive credit for the excess 700 kWh. Not all REPs offer credits for excess energy. Customers should contact their respective REPs for more information. AEP Texas does not purchase or provide a credit for excess energy.*